

---

# Deep Reinforcement Learning with Plasticity Injection

---

Anonymous Author(s)

Affiliation

Address

email

## Abstract

A growing body of evidence suggests that neural networks employed in deep reinforcement learning (RL) gradually lose their plasticity, the ability to learn from new data; however, the analysis and mitigation of this phenomenon is hampered by the complex relationship between plasticity, exploration, and performance in RL. This paper introduces *plasticity injection*, a minimalistic intervention that increases the network plasticity without changing the number of trainable parameters or biasing the predictions. The applications of this intervention are two-fold: first, as a diagnostic tool — if injection increases the performance, we may conclude that an agent’s network was losing its plasticity. This tool allows us to identify a subset of Atari environments where the lack of plasticity causes performance plateaus, motivating future studies on understanding and combating plasticity loss. Second, plasticity injection can be used to improve the computational efficiency of RL training if the agent has to re-learn from scratch due to exhausted plasticity or by growing the agent’s network dynamically without compromising performance. The results on Atari show that plasticity injection attains stronger performance compared to alternative methods while being computationally efficient.

## 1 Introduction

“You cannot teach an old dog new tricks” an old proverb says. While the common wisdom is not necessarily a source of absolute truth, neuroscientists recognized a long time ago that biological agents indeed gradually lose adaptability with age [Livingston, 1966]. This phenomenon is referred to as loss of plasticity in brains [Nelson, 1999, Mateos-Aparicio and Rodríguez-Moreno, 2019] and happens for multiple reasons, including natural degradation of neurons and their connections [Mahnke et al., 2006, Kolb and Gibb, 2011].

Since the biological causes of loss of plasticity do not apply to artificial agents, in principle there is no reason to expect that this phenomenon also happens in the context of machine learning. Surprisingly, several recent works show that reinforcement learning (RL) agents that use neural networks may gradually lose the ability to learn from new experiences [Dohare et al., 2021, Lyle et al., 2022, Nikishin et al., 2022].

The precise mechanisms causing loss of plasticity in RL are not well understood. The problem is particularly challenging to study in this context because performance in RL is influenced by many factors. For example, an agent without plasticity issues may still struggle to learn if it fails to properly explore the environment [Taïga et al., 2019]. Past literature focused on using and controlling proxy measures of plasticity such as the number of saturated rectified linear units [Nair and Hinton, 2010] and feature rank [Kumar et al., 2021], but it is unclear how well these measures manage to capture the underlying phenomenon [Gulcehre et al., 2022].

This paper complements past evidence about the existence of plasticity loss in deep RL and introduces *plasticity injection*, an intervention that augments plasticity of the agent’s neural network. The

conceptual idea is simple: at any point in training, one can freeze the current network and create a new one that is going to be learning a change to the predictions, whilst ensuring that the change is initially zero. Crucially, plasticity injection does not increase the number of *trainable* parameters and does not affect the network’s predictions when it is applied. Because of these properties, the intervention enables careful analysis of the plasticity loss phenomenon in RL while keeping other confounding factors aside.

We suggest two uses of plasticity injection, one as an analytic tool and another as a practical algorithmic technique. For analysis, we propose an experimental protocol that uses plasticity injection for *diagnosing the problem* of plasticity loss: for example, if an agent that was struggling to improve its behavior escapes a performance plateau after the intervention, we can conclude that the agent had been experiencing problems with its network plasticity. Using this protocol in the Arcade Learning Environment [Bellemare et al., 2013], we identify scenarios where loss of plasticity hinders the learning process. Furthermore, based on the intervention-enabled analysis, we provide recommendations for controlling the degree of plasticity loss.

We also propose to use plasticity injection as a way to improve computational efficiency of RL training in the following scenarios. First, when the agent loses its plasticity because its network turns out to be too small, plasticity injection can be dynamically used to increase the capacity of the agent without having to re-train the agent with a larger network from scratch. We empirically show that our method improves the aggregate score across 57 Atari games by 20% compared to other methods for dynamically addressing plasticity loss. Second, plasticity injection can be used to minimize computation by switching from a small network to a larger network in the middle of training without compromising the performance compared to using the larger network from scratch; we also empirically verify it on Atari games.

To summarize, our contributions include:

1. A minimalistic intervention called *plasticity injection* that increases plasticity of the agent while preserving the number of trainable parameters and not affecting its predictions;
2. Complementary evidence about the existence of the plasticity loss phenomenon in deep RL;
3. An experimental protocol for diagnosing loss of plasticity using the intervention;
4. A way to improve computational efficiency of RL training by dynamically expanding a neural network used by the agent.

## 2 Related Work

**Plasticity in Continual Learning.** Discussions about plasticity of neural networks date back (at least) to a seminal paper by McCloskey and Cohen [1989] outlining the plasticity-stability dilemma, a trade-off between preserving performance on previous tasks and maintaining adaptability to future ones. The continual learning community historically put a higher emphasis on the stability aspect, addressing catastrophic forgetting of past behaviors [French, 1999]. Recently, several works raised awareness of difficulties with learning on future tasks too. Ash and Adams [2020] demonstrated an instance of loss of generalization, when pre-training a network might unrecoverably damage generalization even if pre-training was done on a uniform subsample of the same dataset. Berariu et al. [2021] deepened the study and conjectured that the phenomenon might happen because of the reduction of gradient noise when warm-starting the network. Dohare et al. [2021] explicitly study the network plasticity in continual learning and demonstrate the reduced ability to minimize even the training error as the number of tasks increase. These works build an understanding of the problem by studying simplified settings that isolate different aspects of learning capabilities in continual learning, whereas our work aims at tackling the deep RL setting in its whole.

**Loss of Plasticity in Deep RL.** Issues with plasticity and related phenomena have been recently highlighted in deep RL under a plethora of different names. Lyle et al. [2022] show loss of capacity for fitting targets in online RL and Kumar et al. [2021] demonstrate a related implicit under-parameterization phenomenon caused by bootstrapping with more emphasis on the offline RL case. Both of these works use the feature rank as a proxy measure for plasticity but later Gulcehre et al. [2022] question the reliance on such measure by demonstrating a weak correlation between the rank and the agent’s performance, partially motivating our study that focuses directly on agent’s performance to reason about plasticity. Works of Sokar et al. [2023] and Abbas et al. [2023] focus on

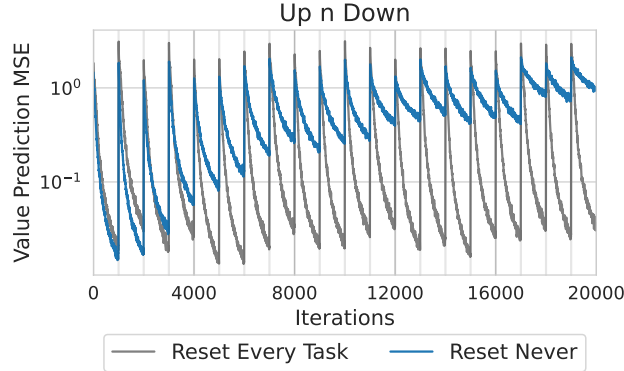


Figure 1: Demonstration of plasticity loss in a sequence of policy evaluation tasks. The task (a policy to evaluate) changes every 1000 iterations. The *reset every task* setting shows that newly-initialized parameters are able to fit each task, whereas the *reset never* setting shows the diminishing capability to fit the data when using the trained parameters from one task as the initialization for another task.

91 saturation of neurons over the course of training, but Lyle et al. [2023] demonstrate that the saturation  
 92 alone cannot fully characterize the plasticity loss phenomenon. Nikishin et al. [2022] discuss the  
 93 primacy bias in deep RL, a tendency to excessively train on early data damaging further learning  
 94 progress, and propose to periodically reset a part of the network to address the issue while relying on  
 95 the replay buffer as a knowledge transfer mechanism. Earlier, Igl et al. [2021] had observed that deep  
 96 RL agents can lose the ability to generalize due to non-stationarity and proposed to use distillation as  
 97 a mitigation mechanism. Plasticity injection closely relates to these approaches by leveraging newly  
 98 initialized weights, but does not require re-training and directly continues learning.

99 **Architectures.** The works above mainly discuss algorithmic aspects with less focus on the network  
 100 architecture, although it is also an important component of the agent’s design [Mirzadeh et al., 2022].  
 101 The closest work in this space is about progressive networks [Rusu et al., 2016] that considers a setting  
 102 with multiple environments and adds a new network with cross-connections to the layers of previous  
 103 networks. A network after plasticity injection can be viewed as a simplified version of the architecture  
 104 with a motivation of increasing plasticity within a single task without affecting agent’s predictions. A  
 105 line of work on the mixture of experts [Shazeer et al., 2017] and modular networks [Andreas et al.,  
 106 2016] is also related, but the focus in these papers typically is compositionality or handling multiple  
 107 modalities. The idea of growing network layers or neurons has also been investigated [Fahlman  
 108 and Lebiere, 1989, Chen et al., 2015]; plasticity injection belongs to a family of these methods up  
 109 to the differences in the growing strategy and in explicitly controlling for the number of trainable  
 110 parameters. In the context of language modeling, Hu et al. [2022] explored a similar idea of freezing  
 111 a pre-trained model and fine-tuning a low-rank addition to the weight matrices on a downstream task.  
 112 Lastly, plasticity injection can be conceptually viewed as an instance of residual learning [He et al.,  
 113 2016] and boosting [Schapire, 1990].

### 114 3 An Illustration of Plasticity Loss

115 Plasticity of a neural network is broadly defined as the ability to learn from new experiences. To  
 116 provide intuition on how this ability can decrease over time, we present a didactic example before  
 117 investigating the case with deep RL. Figure 1 shows the mean-squared error (MSE) on a sequence  
 118 of supervised policy evaluation problems derived from the Up n Down Atari environment. We first  
 119 trained an agent on this environment for 200M frames and stored the policies occurring at every  
 120 10M frames. Then, for each stored policy, we sampled states from the corresponding stationary  
 121 distribution and computed Monte-Carlo estimates of the value function for each state, resulting a  
 122 training set composed of states and their values. We then trained a network to solve the resulting  
 123 sequence of prediction problems. This sequence of related prediction problems differing in the input  
 124 and target distribution aims to reproduce the scenario faced by an online RL agent [Dabney et al.,  
 125 2021]. The curve labeled “reset never” corresponds to starting each prediction problem using the

final parameters from the previous one, while “reset every task” corresponds to randomly initializing the network parameters at every prediction problem.

The conventional wisdom about transfer learning suggests that, if two tasks are related, pre-training on the first might accelerate learning on the second [Pan and Yang, 2009]. Here we observe the opposite trend: it takes longer and longer for the network to decrease training error on the subsequent policy evaluation problems if its parameters are not re-initialized. This example gives a simple demonstration of how plasticity loss can occur; we refer to the work by Dohare et al. [2021] for an in-depth study of the phenomenon in the continual setting.

After building intuition about loss of plasticity, we turn our attention to its analysis in deep RL. The key distinctive feature of RL is the presence of an exploration confounder: in contrast to the continual setting with a fixed sequence of datasets, an RL agent influences the future data it learns from. Thus, a failure of an RL system can be attributed not only to loss of plasticity but also to inability to explore. The next section presents a strategy to increase plasticity of an agent that addresses this difficulty with the analysis.

## 4 Plasticity Injection

Before describing the experimental design in detail, we list the motivating desiderata:

- **Unaffected predictions:** the agent’s predictions should stay the same after the intervention to avoid abrupt changes. This criterion allows isolating confounding factors related to exploration;
- **Preserving the trainable parameter count:** the intervention should not affect the number of trainable parameters to minimize confounding factors related to representational capacity.

We now present the proposed intervention to increase plasticity of an RL agent. First, let us denote the neural network approximator employed by the agent (for example, used for action-value prediction) as  $h_\theta(x)$ , where  $\theta$  indicates the parameters. At some point in training, where the network might have started losing plasticity, we are going to freeze the parameters  $\theta$  and introduce a new set of parameters  $\theta'$  sampled from random initialization. The key idea is to keep two copies of  $\theta'$ , which we denote by  $\theta'_1$  and  $\theta'_2$ ; while  $\theta'_1$  are free parameters used to learn a residual to the old network outputs,  $\theta'_2$  remains frozen throughout. The agent’s predictions after plasticity injection will be calculated using the following expression:

$$\underbrace{h_\theta(x)}_{\text{frozen}} + \underbrace{h_{\theta'_1}(x)}_{\text{trained}} - \underbrace{h_{\theta'_2}(x)}_{\text{frozen}}. \quad (1)$$

Since initially  $\theta'_1 = \theta'_2$ , immediately after plasticity injection the predictions of the neural network remain unaltered. As learning progresses,  $\theta'_1$  deviates from  $\theta'_2$  and  $h_\theta(x) - h_{\theta'_2}(x)$  serves as a bias term for predictions.

Note that if we apply plasticity injection to all parameters of the network, the new network will have to re-learn the representations encoded in  $h_\theta(\cdot)$  from scratch. Thus, we apply our intervention to only a subset of the parameters and explain the idea further with a slight abuse of notation. We schematically split the network into an *encoder*  $\phi(\cdot)$ , that denotes a mapping induced by first  $k$  layers of the network, and a *head*  $h_\theta(\cdot)$  where  $\theta$  now refers to parameters of the remaining layers of the network. After this relabelling, we can apply the intervention to  $h_\theta(\cdot)$  as outlined above. Appendix B later presents an ablation of sharing the encoder.

Figure 2 illustrates the strategy to apply plasticity injection. Note that gradients from the frozen heads affect the encoder too, i.e. we do not stop the gradient propagation from any of the components of the output. It is worth noting that the proposed intervention increases the total number of parameters of the network (but keeps the same number of *trainable* parameters), which in turn may result in an increase of training time. However, we later discuss in Section 5.3 how plasticity injection can *save* computational resources.

The idea of learning with newly-initialized last layers has been explored by Nikishin et al. [2022], who suggested resetting the corresponding parameters of the network at fixed intervals and used the replay buffer [Lin, 1992] to re-learn after resets. Their experimental evidence supports the hypothesis that resets mitigate plasticity loss. However, resetting parameters of the network abruptly changes

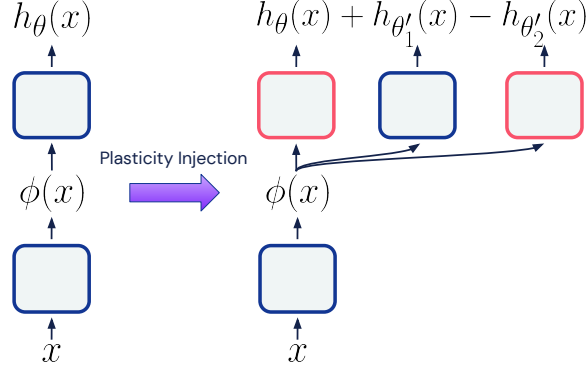


Figure 2: An illustration of the architecture before and after plasticity injection. Before the intervention, the network is schematically separated into an encoder  $\phi(\cdot)$  and a head  $h_{\theta}(\cdot)$ , both parts are learning. After plasticity injection, we freeze the parameters  $\theta$  of the head (we use red to indicate parameters that are not updated in the illustration) and create two copies of a randomly initialized parameters  $\theta'$ : one frozen and one unfrozen. The output of the agent is obtained by first passing the input  $x$  to the encoder  $\phi(\cdot)$ , next passing  $\phi(x)$  to all three heads, and finally combining the heads' outputs according to Expression (1).

its predictions, which results in a temporary decrease in performance and induces an exploration effect. From an analysis perspective, these abrupt changes make it more difficult to isolate the effect of additional plasticity on the agent's performance. From a practical perspective, plasticity injection does not rely on the buffer; Section 5.3 demonstrates how this difference can be critical.

## 5 Experiments

This section presents results for two main applications of plasticity injection: as a tool for diagnosing plasticity loss and as a way to dynamically grow the network to efficiently use computations.

### 5.1 Experimental Setup

The baseline agent is Double DQN [Van Hasselt et al., 2016] learning for 200M interactions on a standard set of 57 Atari games from the Arcade Learning Environment benchmark [Bellemare et al., 2013]. The choice of Double DQN is motivated by the relative robustness and stronger performance with double Q-learning [Van Hasselt, 2010] compared to the vanilla DQN agent [Mnih et al., 2015] as well as simplicity compared to later DQN-based agents such as Rainbow [Hessel et al., 2018].

The majority of the experiments use a single plasticity injection after 50M frames; otherwise, we explicitly specify the number and timesteps of injections. Appendix B discusses ablations on the design choices when using plasticity injection. A convolutional neural network employed by the Double DQN agent consists of 5 layers. The encoder corresponds to the first three of them (hence  $k = 3$ ), while the head refers to the last two. Since DQN-based agents employ a target copy of the network parameters, we perform the same interventions on them.

For reliable evaluation of the performance across environments, we adopt the protocol of Agarwal et al. [2021] with a focus on the interquartile mean (IQM). All experiments use 3 random seeds.

### 5.2 Plasticity Injection as a Diagnostic Tool

Consider the task of improving a deep RL system when an agent performs suboptimally. Practitioners know how non-trivial is the process of pinpointing exact reasons why an agent might be struggling to improve the behavior. One of the reasons, as we discussed, can be loss of network plasticity throughout training.

We view the proposed intervention as a tool that can provide insight when analyzing deep RL systems. The procedure for using it is as follows: when an agent is on a performance plateau or has a slower

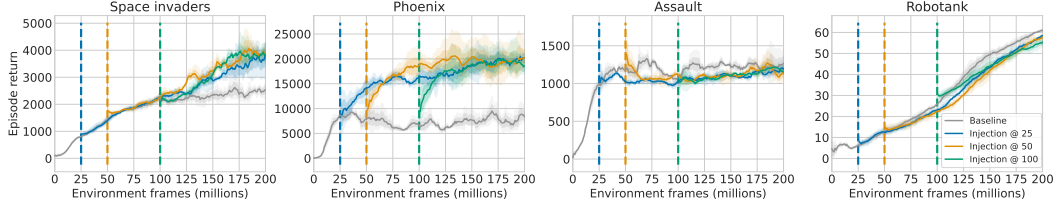


Figure 3: A demonstration of diverse effects from plasticity injection applied to the Double DQN agent after 25M, 50M, and 100M frames on a selection of Atari games comprising two examples where the intervention improves the performance and two examples where it does not. The baseline in `Space invaders` and `Phoenix` demonstrates the diminishing performance improvements and the performance plateau respectively, whilst the agent after the injection is capable of achieving higher returns. The stalled performance in `Assault` is due to exploration challenges (see Appendix D for further details): adding plasticity could not alleviate them. If the agent does not show signs of the diminishing ability to learn, like in `Robotank`, the injection would not lead to improved performance. Varying the injection timestep allows identifying the moment when plasticity loss occurs. Results for all 57 environments are available in Figure 7.

learning progress, take a saved copy of the agent, perform plasticity injection, and compare the training curves with and without the intervention. This way we answer a counterfactual question: what could have been the agent’s performance if the network had more plasticity?

Figure 3 gives a set of example behaviors after following the procedure. In `Space invaders`, the baseline agent keeps learning but the post-injection agent improves at a faster rate towards the end of learning; we might interpret the observation as an indication of decreasing network plasticity over the course of training. In `Phoenix`, we see a completely stalled performance and the intervention allows doubling the final returns; such an observation point at possible *catastrophic* loss of plasticity, where additional interactions do not translate to improved behavior. In `Assault`, on the other hand, the agent has plateaued but the injection does not make a difference. Further inspection revealed that around a score of 2800, the environment transitions to a new regime where an agent needs to start using an action that was not relevant before (see Appendix D for a visualization). This observation suggests that performance stagnation is related to exploration. In `Robotank`, the learning progress shows no signs of pathologies, giving evidence that the agent does not experience problems with its plasticity.

Plasticity injection can also demonstrate *when* loss of plasticity occurs. The post-intervention performance in `Space invaders` does not differ for varying injection timestep, suggesting that the agent might not start experiencing consequences of the lost plasticity until around 100M frames. On the other hand, in `Phoenix`, plasticity injection improves the performance earlier, implying that the agent lost its plasticity around 25M frames. Varying the moment of injection in `Assault` and `Robotank` does not change the performance significantly, supporting our previous conclusion about these games.

Figure 4 summarizes when and to which extent the Double DQN agent benefits from plasticity injection across 57 Atari games. The observations about improvements from injection complement evidence of the existence of plasticity loss in deep RL [Kumar et al., 2021, Lyle et al., 2022, Nikishin et al., 2022]. We note that the argument here is nuanced: since the notion of plasticity is defined broadly and is challenging to measure, *it is our best interpretation* that the post-intervention agent can learn further because it addressed plasticity issues. But because of an experimental design that strived to be careful, we believe that it is the most likely explanation.

What should we do after using the tool and observing loss of plasticity? Dohare et al. [2021], Nikishin et al. [2022], Gogianu et al. [2021] provide evidence that plasticity loss is strongly affected by the learning rate, the replay ratio (the number of gradient steps per an environment step), the network size<sup>1</sup>, and normalizations (such as spectral norm [Miyato et al., 2018]). We measure the sensitivity of the aggregate improvements of the final score from plasticity injection at 50M with respect to these choices of the agent specification. Results in Figure 5 are consistent with observations from previous

<sup>1</sup>To make a network two times larger, we multiply the width of all hidden layers by  $\sqrt{2}$ .

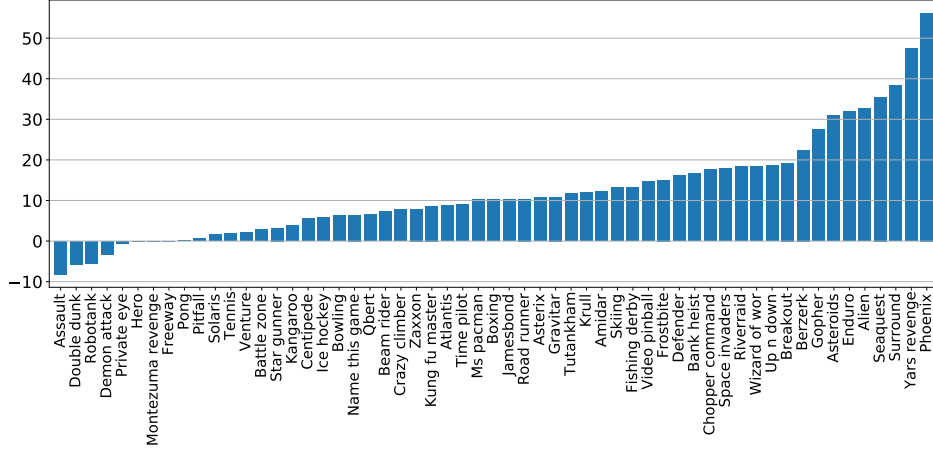


Figure 4: Percentage improvement of the average performance after adding plasticity injection across all 57 Atari games. We take the maximum score among the agents with plasticity injection after 25M, 50M, and 100M steps to roughly estimate the improvement as if plasticity injection was applied at a proper timestep and to demonstrate what the performance could have been if plasticity loss was mitigated. Table 1 later presents a categorization of environments into buckets where the agent does and does not benefit from injection. Learning curves corresponding to each environment are available in Appendix A.

works and suggest a recipe for controlling the degree of plasticity loss by decreasing the learning rate or the replay ratio, increasing the network size, or employing normalizations<sup>2</sup>.

In addition to gaining scientific insight, we now discuss how the intervention can be useful in large-scale RL.

### 5.3 Plasticity Injection for Computational Efficiency

Over the recent years, RL agents have been trained at increasingly larger scales. For example, mastering particularly challenging environments required an equivalent of hundreds of years of human gameplay [Vinyals et al., 2019], or obtaining a diverse set of skills required a 1B+ parameter networks [Reed et al., 2022]. Given the trend, computational considerations become increasingly relevant.

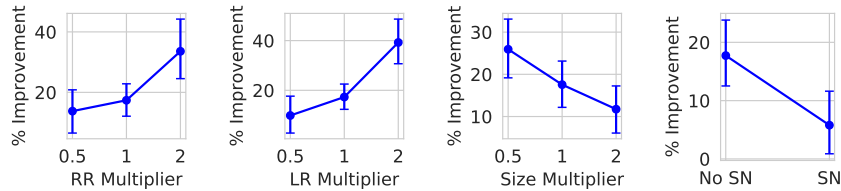


Figure 5: Percentage improvements of the IQM scores from plasticity injection in varying regimes controlling the degree of plasticity loss. The intervention effect size monotonically increases with the replay ratio (RR) and the learning rate (LR), monotonically decreases with the size of the neural network, and is smaller yet positive for an agent employing spectral normalization (SN). These observations can be seen as recommendations about how to address loss of plasticity.

<sup>2</sup>We follow the recommendation of Gogianu et al. [2021] and apply SN to the penultimate layer; since we apply injection to the last two layers, issues with their plasticity might be partially alleviated by SN. Given that Gogianu et al. [2021] notice that the spectral norm of other layers starts growing more and D’Oro et al. [2023] observe that the first layers benefit from partial resets, we conjecture that first layers’ plasticity is still declining even with SN.



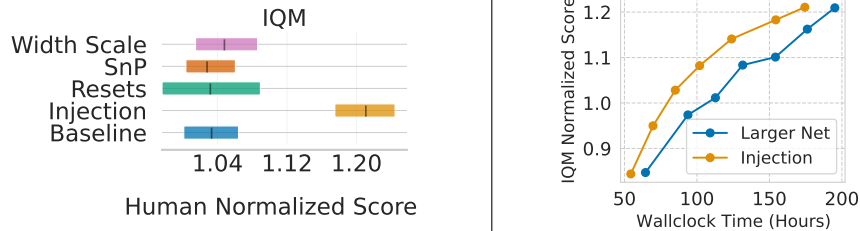


Figure 6: **Left:** Comparison of plasticity injection to other methods that can be applied to dynamically address loss of plasticity. The difference in performance between all methods and the baseline is insignificant except for injection; an agent with injection is capable of improving without having to re-train from scratch. **Right:** Performance over wallclock time for an agent with plasticity injection and an agents that uses a network with increased width from the beginning. Because *Injection* switches from a small network to a larger network through plasticity injection at 50M frames and uses less trainable parameters than *Larger Net*, it achieves similar IQM while saving an equivalent of 20 hours of computational resources.

248 Plasticity injection can be used to improve the computational efficiency of RL in the following ways.

249 **Reincarnating with Plasticity Injection.** Recently, Agarwal et al. [2022] proposed a workflow  
 250 called “Reincarnating RL” which reuses computations from previously trained agents during the  
 251 iterative process of agent design. For example, if we trained an agent for several days or weeks and  
 252 then decided to change its design (such as the network size), the workflow suggests to leverage the  
 253 spent computations instead of training again from scratch. Plasticity injection can be useful from  
 254 this perspective when the agent is unable to improve due to loss of plasticity and re-training from  
 255 scratch is expensive. To see the effectiveness of plasticity injection in such setting, we compared  
 256 plasticity injection with several alternatives that address loss of plasticity dynamically during training,  
 257 including Shrink-and-Perturb (SnP) [Ash and Adams, 2020], resets [Nikishin et al., 2022], and naive  
 258 width scaling (we describe the methods in detail in Appendix C). Figure 6 (left) shows that plasticity  
 259 injection achieves a higher aggregate score across 57 Atari games compared to the alternatives. The  
 260 results suggest that plasticity injection can be used to “reincarnate” agents more efficiently compared  
 261 to the alternatives, without re-training from scratch.

262 **Minimizing Computations via Dynamic Growth.** Although larger networks tend to maintain  
 263 plasticity longer, they require more computations or can be more challenging to train [Team et al.,  
 264 2023]. We hypothesize that the full capacity of a *large network may not always be necessary early*  
 265 *in training*, even if it is useful to maintain plasticity later. If this hypothesis is true, we can save  
 266 computations by starting from a smaller network and injecting plasticity during training, without  
 267 compromising the final performance compared to using the large network from the beginning. To  
 268 verify this hypothesis, we took a network with larger layer width, matching the total number of  
 269 parameters in  $\phi(\cdot)$ ,  $h_\theta(\cdot)$ , and  $h_{\theta_1}(\cdot)$  combined. The results in Figure 6 (right) show that an agent  
 270 with plasticity injection during training performs comparably to the alternative that uses a larger  
 271 network from the start. At the same time, it saves about 20 hours of wallclock time on an A100 GPU  
 272 since it uses a smaller network up to 50M frames and has fewer parameters that are updated after  
 273 plasticity injection. These results confirm the hypothesis and suggest that plasticity injection can be  
 274 used as a tool for minimizing computations when training RL systems at a large scale.

## 275 6 Limitations

276 The first and foremost limitation of plasticity injection is an increase in memory and training time  
 277 compared to the baseline agent with a standard-sized network. When using plasticity injection as  
 278 a diagnostic tool, we believe the overhead is largely justified since preserving the network output  
 279 makes it easier to isolate confounding factors like exploration. From the deployment viewpoint, a  
 280 practitioner should decide whether the increase in compute and memory is justified based on how  
 281 much plasticity injection improves performance. While the effect of the intervention was positive on  
 282 the aggregate performance on Atari, it varied considerably across individual games: in some cases, it  
 283 did not change scores much, in other cases, it had a significant positive effect.



Preserving the network outputs and keeping weights can be undesirable in case of parameter divergence that often occurs in the deep RL experimentation [Van Hasselt et al., 2018]. Such a scenario also qualifies as loss of plasticity; addressing it without drastic tools can be challenging. Lastly, while we propose a diagnostic and mitigation tool, we do not identify causal factors driving plasticity loss in deep RL. More research is needed here: understanding these causes could lead to avoiding plasticity loss in the first place.

## 7 Discussion and Conclusion

Results in this paper can serve as a clear study of the plasticity loss phenomenon in deep RL and evidence that the optimization aspect in RL still leaves room for improvement. The version of plasticity injection we propose may yet not be optimal: we strived for simplicity rather than performance and view the intervention as a blueprint for future methods.

The experiments in this paper adopted the convolutional architecture from Van Hasselt et al. [2016] but modern deep RL practice not rarely involves ResNets [He et al., 2016, Espeholt et al., 2018] and Transformers [Vaswani et al., 2017, Chen et al., 2021, Reed et al., 2022]; we did not investigate settings with these advanced architectures. However, the idea of plasticity injection is agnostic to the choice of the architecture. For example, it can be applied for residual blocks in ResNets or decoder blocks in Transformers.

An exciting avenue for future research is understanding trade-offs between architectural design decisions: RL agents typically employ networks that were originally proposed for stationary problems, but perhaps dynamically growing networks would suit the non-stationary nature of RL better.

Applications of plasticity injection focus on diagnosing RL systems and their efficiency. We complement a recent opinion paper from Mannor and Tamar [2023] by arguing that if deep RL is to become a technology that a non-expert can use, more research is needed on the process of iterating on the agent design and computational efficiency.

Although this paper attempted to understand and mitigate loss of plasticity in RL, there are still remaining open questions. Can we solve the problem of plasticity loss completely? Which properties of newly initialized networks enable high plasticity? Answering these questions is a key challenge for training truly intelligent agents.

## References

- Zaheer Abbas, Rosie Zhao, Joseph Modayil, Adam White, and Marlos C Machado. Loss of plasticity in continual deep reinforcement learning. *arXiv preprint arXiv:2303.07507*, 2023.
- Rishabh Agarwal, Max Schwarzer, Pablo Samuel Castro, Aaron Courville, and Marc Bellemare. Deep reinforcement learning at the edge of the statistical precipice. *Advances in Neural Information Processing Systems*, 34, 2021.
- Rishabh Agarwal, Max Schwarzer, Pablo Samuel Castro, Aaron Courville, and Marc G Bellemare. Reincarnating reinforcement learning: Reusing prior computation to accelerate progress. In Alice H. Oh, Alekh Agarwal, Danielle Belgrave, and Kyunghyun Cho, editors, *Advances in Neural Information Processing Systems*, 2022.
- Jacob Andreas, Marcus Rohrbach, Trevor Darrell, and Dan Klein. Neural module networks. In *Proceedings of the IEEE conference on computer vision and pattern recognition*, pages 39–48, 2016.
- Jordan Ash and Ryan P Adams. On warm-starting neural network training. *Advances in Neural Information Processing Systems*, 33:3884–3894, 2020.
- Marc G Bellemare, Yavar Naddaf, Joel Veness, and Michael Bowling. The arcade learning environment: An evaluation platform for general agents. *Journal of Artificial Intelligence Research*, 47: 253–279, 2013.
- Marc G Bellemare, Will Dabney, and Rémi Munos. A distributional perspective on reinforcement learning. In *International conference on machine learning*, pages 449–458. PMLR, 2017.

332 Tudor Berariu, Wojciech Czarnecki, Soham De, Jorg Bornschein, Samuel Smith, Razvan Pascanu, and  
333 Claudia Clopath. A study on the plasticity of neural networks. *arXiv preprint arXiv:2106.00042*,  
334 2021.

335 Anthony Brohan, Noah Brown, Justice Carbajal, Yevgen Chebotar, Joseph Dabis, Chelsea Finn,  
336 Keerthana Gopalakrishnan, Karol Hausman, Alex Herzog, Jasmine Hsu, et al. Rt-1: Robotics  
337 transformer for real-world control at scale. *arXiv preprint arXiv:2212.06817*, 2022.

338 Lili Chen, Kevin Lu, Aravind Rajeswaran, Kimin Lee, Aditya Grover, Misha Laskin, Pieter Abbeel,  
339 Aravind Srinivas, and Igor Mordatch. Decision transformer: Reinforcement learning via sequence  
340 modeling. *Advances in neural information processing systems*, 34:15084–15097, 2021.

341 Tianqi Chen, Ian Goodfellow, and Jonathon Shlens. Net2net: Accelerating learning via knowledge  
342 transfer. *arXiv preprint arXiv:1511.05641*, 2015.

343 Will Dabney, André Barreto, Mark Rowland, Robert Dadashi, John Quan, Marc G Bellemare, and  
344 David Silver. The value-improvement path: Towards better representations for reinforcement  
345 learning. In *Proceedings of the AAAI Conference on Artificial Intelligence*, volume 35, pages  
346 7160–7168, 2021.

347 Shibhansh Dohare, Richard S Sutton, and A Rupam Mahmood. Continual backprop: Stochastic  
348 gradient descent with persistent randomness. *arXiv preprint arXiv:2108.06325*, 2021.

349 Kefan Dong, Yuping Luo, Tianhe Yu, Chelsea Finn, and Tengyu Ma. On the expressivity of neural  
350 networks for deep reinforcement learning. In Hal Daumé III and Aarti Singh, editors, *Proceedings  
351 of the 37th International Conference on Machine Learning*, volume 119 of *Proceedings of Machine  
352 Learning Research*, pages 2627–2637. PMLR, 13–18 Jul 2020.

353 Pierluca D’Oro, Max Schwarzer, Evgenii Nikishin, Pierre-Luc Bacon, Marc G. Bellemare, and  
354 Aaron C. Courville. Sample-efficient reinforcement learning by breaking the replay ratio barrier.  
355 In *Eleventh International Conference on Learning Representations*, 2023.

356 Lasse Espeholt, Hubert Soyer, Remi Munos, Karen Simonyan, Vlad Mnih, Tom Ward, Yotam Doron,  
357 Vlad Firoiu, Tim Harley, Iain Dunning, et al. Impala: Scalable distributed deep-rl with importance  
358 weighted actor-learner architectures. In *International conference on machine learning*, pages  
359 1407–1416. PMLR, 2018.

360 Scott Fahlman and Christian Lebiere. The cascade-correlation learning architecture. *Advances in  
361 neural information processing systems*, 2, 1989.

362 Amir Farahmand, Mohammad Ghavamzadeh, Shie Mannor, and Csaba Szepesvári. Regularized  
363 policy iteration. *Advances in Neural Information Processing Systems*, 21, 2008.

364 Robert M French. Catastrophic forgetting in connectionist networks. *Trends in cognitive sciences*, 3  
365 (4):128–135, 1999.

366 Florin Gogianu, Tudor Berariu, Mihaela C Rosca, Claudia Clopath, Lucian Busoniu, and Razvan  
367 Pascanu. Spectral normalisation for deep reinforcement learning: an optimisation perspective. In  
368 *International Conference on Machine Learning*, pages 3734–3744. PMLR, 2021.

369 Caglar Gulcehre, Srivatsan Srinivasan, Jakub Sygnowski, Georg Ostrovski, Mehrdad Farajtabar, Matt  
370 Hoffman, Razvan Pascanu, and Arnaud Doucet. An empirical study of implicit regularization in  
371 deep offline rl. *arXiv preprint arXiv:2207.02099*, 2022.

372 Kaiming He, Xiangyu Zhang, Shaoqing Ren, and Jian Sun. Deep residual learning for image  
373 recognition. In *Proceedings of the IEEE conference on computer vision and pattern recognition*,  
374 pages 770–778, 2016.

375 Matteo Hessel, Joseph Modayil, Hado Van Hasselt, Tom Schaul, Georg Ostrovski, Will Dabney, Dan  
376 Horgan, Bilal Piot, Mohammad Azar, and David Silver. Rainbow: Combining improvements in  
377 deep reinforcement learning. In *Thirty-second AAAI conference on artificial intelligence*, 2018.

378 Edward J Hu, Yelong Shen, Phillip Wallis, Zeyuan Allen-Zhu, Yanzhi Li, Shean Wang, Lu Wang,  
379 and Weizhu Chen. LoRA: Low-rank adaptation of large language models. In *International  
380 Conference on Learning Representations*, 2022.

381 Maximilian Igl, Gregory Farquhar, Jelena Luketina, Wendelin Boehmer, and Shimon Whiteson.  
382 Transient non-stationarity and generalisation in deep reinforcement learning. In *International*  
383 *Conference on Learning Representations*, 2021.

384 Lukasz Kaiser, Mohammad Babaeizadeh, Piotr Milos, Blazej Osinski, Roy H Campbell, Konrad  
385 Czechowski, Dumitru Erhan, Chelsea Finn, Piotr Kozakowski, Sergey Levine, et al. Model-based  
386 reinforcement learning for atari. *arXiv preprint arXiv:1903.00374*, 2019.

387 Bryan Kolb and Robbin Gibb. Brain plasticity and behaviour in the developing brain. *Journal of the*  
388 *Canadian Academy of Child and Adolescent Psychiatry*, 20(4):265, 2011.

389 Aviral Kumar, Rishabh Agarwal, Dibya Ghosh, and Sergey Levine. Implicit under-parameterization  
390 inhibits data-efficient deep reinforcement learning. In *International Conference on Learning*  
391 *Representations*, 2021.

392 Qiyang Li, Aviral Kumar, Ilya Kostrikov, and Sergey Levine. Efficient deep reinforcement learning  
393 requires regulating overfitting. In *The Eleventh International Conference on Learning Representa-*  
394 *tions*, 2023.

395 Timothy P Lillicrap, Jonathan J Hunt, Alexander Pritzel, Nicolas Heess, Tom Erez, Yuval Tassa,  
396 David Silver, and Daan Wierstra. Continuous control with deep reinforcement learning. *arXiv*  
397 *preprint arXiv:1509.02971*, 2015.

398 Long-Ji Lin. Self-improving reactive agents based on reinforcement learning, planning and teaching.  
399 *Machine learning*, 8(3):293–321, 1992.

400 Robert B Livingston. Brain mechanisms in conditioning and learning. Technical report, 1966.

401 Clare Lyle, Mark Rowland, and Will Dabney. Understanding and preventing capacity loss in  
402 reinforcement learning. In *International Conference on Learning Representations*, 2022.

403 Clare Lyle, Zeyu Zheng, Evgenii Nikishin, Bernardo Avila Pires, Razvan Pascanu, and Will Dabney.  
404 Understanding plasticity in neural networks. *arXiv preprint arXiv:2303.01486*, 2023.

405 Henry W Mahncke, Amy Bronstone, and Michael M Merzenich. Brain plasticity and functional  
406 losses in the aged: scientific bases for a novel intervention. *Progress in brain research*, 157:81–109,  
407 2006.

408 Shie Mannor and Aviv Tamar. Towards deployable rl—what’s broken with rl research and a potential  
409 fix. *arXiv preprint arXiv:2301.01320*, 2023.

410 Pedro Mateos-Aparicio and Antonio Rodríguez-Moreno. The impact of studying brain plasticity.  
411 *Frontiers in cellular neuroscience*, 13:66, 2019.

412 Michael McCloskey and Neal J Cohen. Catastrophic interference in connectionist networks: The  
413 sequential learning problem. In *Psychology of learning and motivation*, volume 24, pages 109–165.  
414 Elsevier, 1989.

415 Seyed Iman Mirzadeh, Arslan Chaudhry, Dong Yin, Timothy Nguyen, Razvan Pascanu, Dilan  
416 Gorur, and Mehrdad Farajtabar. Architecture matters in continual learning. *arXiv preprint*  
417 *arXiv:2202.00275*, 2022.

418 Takeru Miyato, Toshiki Kataoka, Masanori Koyama, and Yuichi Yoshida. Spectral normalization for  
419 generative adversarial networks. In *International Conference on Learning Representations*, 2018.

420 Volodymyr Mnih, Koray Kavukcuoglu, David Silver, Andrei A Rusu, Joel Veness, Marc G Bellemare,  
421 Alex Graves, Martin Riedmiller, Andreas K Fidjeland, Georg Ostrovski, et al. Human-level control  
422 through deep reinforcement learning. *nature*, 518(7540):529–533, 2015.

423 Volodymyr Mnih, Adria Puigdomenech Badia, Mehdi Mirza, Alex Graves, Timothy Lillicrap, Tim  
424 Harley, David Silver, and Koray Kavukcuoglu. Asynchronous methods for deep reinforcement  
425 learning. In *International conference on machine learning*, pages 1928–1937. PMLR, 2016.

426 Vinod Nair and Geoffrey E Hinton. Rectified linear units improve restricted boltzmann machines. In  
427 *Icml*, 2010.

428 Charles A Nelson. Neural plasticity and human development. *Current directions in psychological*  
429 *science*, 8(2):42–45, 1999.

430 Evgenii Nikishin, Max Schwarzer, Pierluca D’Oro, Pierre-Luc Bacon, and Aaron Courville. The  
431 primacy bias in deep reinforcement learning. In *International Conference on Machine Learning*,  
432 pages 16828–16847. PMLR, 2022.

433 Sinno Jialin Pan and Qiang Yang. A survey on transfer learning. *IEEE Transactions on knowledge*  
434 *and data engineering*, 22(10):1345–1359, 2009.

435 Scott Reed, Konrad Zolna, Emilio Parisotto, Sergio Gomez Colmenarejo, Alexander Novikov, Gabriel  
436 Barth-Maron, Mai Gimenez, Yury Sulsky, Jackie Kay, Jost Tobias Springenberg, et al. A generalist  
437 agent. *arXiv preprint arXiv:2205.06175*, 2022.

438 Andrei A Rusu, Neil C Rabinowitz, Guillaume Desjardins, Hubert Soyer, James Kirkpatrick, Koray  
439 Kavukcuoglu, Razvan Pascanu, and Raia Hadsell. Progressive neural networks. *arXiv preprint*  
440 *arXiv:1606.04671*, 2016.

441 Robert E Schapire. The strength of weak learnability. *Machine learning*, 5(2):197–227, 1990.

442 Julian Schrittwieser, Ioannis Antonoglou, Thomas Hubert, Karen Simonyan, Laurent Sifre, Simon  
443 Schmitt, Arthur Guez, Edward Lockhart, Demis Hassabis, Thore Graepel, et al. Mastering atari,  
444 go, chess and shogi by planning with a learned model. *Nature*, 2021.

445 John Schulman, Sergey Levine, Pieter Abbeel, Michael Jordan, and Philipp Moritz. Trust region  
446 policy optimization. In *International conference on machine learning*, pages 1889–1897. PMLR,  
447 2015.

448 Noam Shazeer, \*Azalia Mirhoseini, \*Krzysztof Maziarczyk, Andy Davis, Quoc Le, Geoffrey Hinton,  
449 and Jeff Dean. Outrageously large neural networks: The sparsely-gated mixture-of-experts layer.  
450 In *International Conference on Learning Representations*, 2017.

451 Ghada Sokar, Rishabh Agarwal, Pablo Samuel Castro, and Utku Evci. The dormant neuron phe-  
452 nomenon in deep reinforcement learning. *arXiv preprint arXiv:2302.12902*, 2023.

453 Ilya Sutskever, James Martens, George Dahl, and Geoffrey Hinton. On the importance of initialization  
454 and momentum in deep learning. In *International conference on machine learning*, pages 1139–  
455 1147. PMLR, 2013.

456 Adrien Ali Taïga, William Fedus, Marlos C Machado, Aaron Courville, and Marc G Bellemare.  
457 Benchmarking bonus-based exploration methods on the arcade learning environment. *arXiv*  
458 *preprint arXiv:1908.02388*, 2019.

459 Adaptive Agent Team, Jakob Bauer, Kate Baumli, Satinder Baveja, Feryal Behbahani, Avishkar  
460 Bhoopchand, Nathalie Bradley-Schmieg, Michael Chang, Natalie Clay, Adrian Collister, et al.  
461 Human-timescale adaptation in an open-ended task space. *arXiv preprint arXiv:2301.07608*, 2023.

462 Tijmen Tieleman, Geoffrey Hinton, et al. Lecture 6.5-rmsprop: Divide the gradient by a running  
463 average of its recent magnitude. *COURSERA: Neural networks for machine learning*, 4(2):26–31,  
464 2012.

465 Hado Van Hasselt. Double q-learning. *Advances in neural information processing systems*, 23, 2010.

466 Hado Van Hasselt, Arthur Guez, and David Silver. Deep reinforcement learning with double q-  
467 learning. In *Proceedings of the AAAI conference on artificial intelligence*, volume 30, 2016.

468 Hado Van Hasselt, Yotam Doron, Florian Strub, Matteo Hessel, Nicolas Sonnerat, and Joseph  
469 Modayil. Deep reinforcement learning and the deadly triad. *arXiv preprint arXiv:1812.02648*,  
470 2018.

471 Ashish Vaswani, Noam Shazeer, Niki Parmar, Jakob Uszkoreit, Llion Jones, Aidan N Gomez, Łukasz  
472 Kaiser, and Illia Polosukhin. Attention is all you need. *Advances in neural information processing*  
473 *systems*, 30, 2017.

474 Oriol Vinyals, Igor Babuschkin, Wojciech M Czarnecki, Michaël Mathieu, Andrew Dudzik, Junyoung  
475 Chung, David H Choi, Richard Powell, Timo Ewalds, Petko Georgiev, et al. Grandmaster level in  
476 starcraft ii using multi-agent reinforcement learning. *Nature*, 575(7782):350–354, 2019.

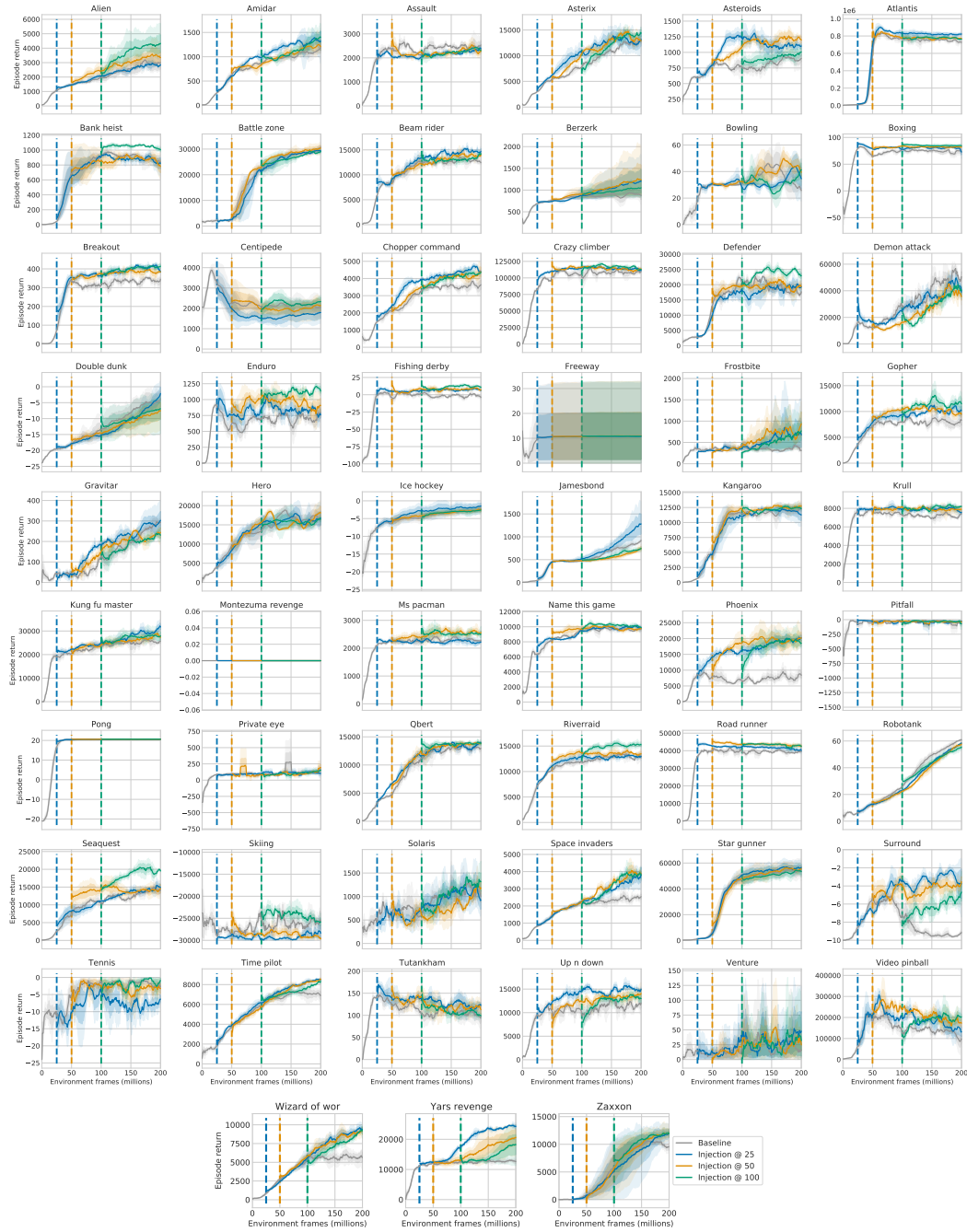


Figure 7: Performance of the Double DQN with and without plasticity injection after 25M, 50M, and 100M frames on the full Atari 57 benchmark. The potential discontinuities in the plots such as in Road runner are caused by the evaluation each 1M frames, i.e. the first moment the agent with injection contributes to the plot is after learning for 1M frames.

Injection Effect	Environments
Consistent Improvement	Alien, Asteroids, Breakout, Chopper command, Enduro, Frostbite, Gopher, Phoenix, Space invaders, Surround, Wizard of wor, Yars revenge (12 total)
Minor Improvement	Amidar, Asterix, Atlantis, Bank heist, Beam rider, Berzerk, Boxing, Defender, Fishing derby, Jamesbond, Krull, Ms pacman, Road runner, Seaquest, Time pilot, Up n down, Video pinball, Zaxxon (18 total)
Negligible	Battle zone, Bowling, Centipede, Crazy climber, Double dunk, Freeway, Gravitar, Hero, Ice hockey, Kangaroo, Kung fu master, Montezuma revenge, Name this game, Pitfall, Pong, Private eye, Qbert, Riverraid, Skiing, Solaris, Star gunner, Tennis, Tutankham, Venture (24 total)
Negative	Assault, Demon attack, Robotank (3 total)

Table 1: Summary of effects from applying plasticity injection to Double DQN on 57 Atari games.

## A Complete Learning Curves

Figure 7 presents the return plots over the course of Double DQN training for 200M frames on the whole set of 57 Atari games. We informally categorized environments into four buckets upon visual inspection of effects from plasticity injection in Table 1. The most notable negative example is Demon attack, while on Assault and Robotank the effect is negative but minor. In the rest of the 54 games, plasticity injection either improves performance or has a negligible effect, possibly depending on the injection timestep.

## B Ablations

This appendix presents an ablation analysis of the various design choices made during the study of plasticity injection. The purpose of such ablations is to build intuition on the behavior of plasticity injection under different conditions so that an RL practitioner can use it in their application.

**Injection Variants.** The proposed modification of the network architecture is not the only one possible. In Section 4, we initially described a version of plasticity injection without encoder sharing, that is, when the intervention is applied to the entire network (referred to as *Injection, Whole Net* in Figure 8). Another alternative is to create a whole new set of parameters and copy the encoder parameters of the old network without sharing it (denoted as *Injection, Whole Net, Copy Enc*). Lastly, for all three versions, there is the possibility of *not* freezing the old set of parameters (weights corresponding to the third, output correction term are always going to be frozen).

Figure 8 (left) summarizes the findings:

1. Creating a completely new encoder-head pair is the alternative with the lowest IQM scores;
2. Variants with encoder sharing or copying have comparable performance; the *Injection, Whole Net, Copy Enc* version has a slightly lower performance than the rest. We conjecture that it might be due to the larger number of frozen parameters;
3. Unfrozen variants generally perform not worse than their frozen counterparts. The unfrozen variants introduce more trainable parameters compared to the baseline, which require more computations during learning and increase the network expressivity. Since we were interested in a careful diagnosis of plasticity loss and extra expressivity may be a confounding factor, we decided to stick to the frozen version by default.

**Multiple Injections.** Given the improved performance from plasticity injection in the previous experiments, a natural question is whether applying plasticity injection multiple times would improve performance even further. To investigate this question, we applied plasticity injection at 100M and 150M frames, in addition to 50M frames, and plotted the IQM improvements with respect to a single injection at 50M frames. As shown in Figure 8 (right), additional injections do not improve the performance over a single injection in a setup with a standard network. We hypothesize that in our particular experimental setting, loss of plasticity can be largely mitigated with a single plasticity

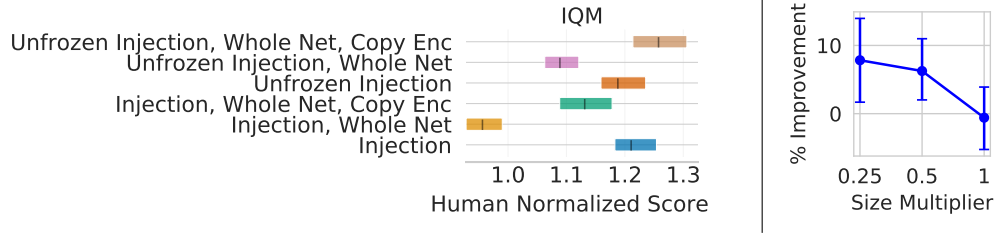


Figure 8: **Left:** Comparison between variations of plasticity injection. *Whole Net* denotes injection of both the encoder  $\phi(\cdot)$  and the head  $h_\theta(x)$ ; *Copy Enc* denotes copying the  $\phi(\cdot)$  at the moment of injection without further sharing; *Unfrozen* denotes keeping parameters of the first term unfrozen. Relying on a new encoder leads to a lower performance; the rest of the alternatives have comparable scores. **Right:** Percentage improvements of the IQM score from multiple injections over a single injection for varying network sizes. Multiple injections are beneficial for smaller networks. Note that previous plots in Figure 5 show improvements when comparing one injection over no injections while this plot compares multiple injections over one.

injection. To verify this hypothesis, we applied multiple injections while varying the network size (similarly to Section 5.2, to make the network 2x smaller, we divide the width of the hidden layers by  $\sqrt{2}$ ). Figure 8 (right) confirms that the level of improvement grows monotonically as the agent uses smaller networks. Since the results in Figure 5 suggests that the degree of plasticity loss increases with smaller networks, this result indicates that multiple rounds of plasticity injection can be beneficial in situations where the agent network is too small to maintain plasticity.

**No Output Correction.** In the majority of the games, subtracting the initial copy of the newly introduced head  $h_{\theta_2}(\cdot)$  resulted in mostly similar learning curves as without the subtraction, although not always. In particular, the impact of the injection on *Yars Revenge* is smaller without compensating for the bias. Also, we observed a significant difference in high variance games (such as *Berzerk* and *Hero*). Note that removing effects on the predictions from introducing the new head would be possible by modifying the initialization [Brohan et al., 2022]. From the analysis viewpoint, we strove to have as clean experimental design as possible and wanted to remove initialization-specific confounders since initialization would affect network plasticity as well [Sutskever et al., 2013]. From the saving memory and computations viewpoint, it might be preferable to do plasticity injection without introducing the third network.

**Optimizer.** One might hypothesize that benefits from injection can be attributed to manipulations with the optimizer state. To test this hypothesis, we perform two ablations: the first resets statistics of the RMSProp optimizer [Tieleman et al., 2012] used by Double DQN after 50M steps, the second copies the optimizer state of the original head to the newly initialized head after the injection. Figure 9 (left) demonstrates that most of the effects from injection come from having additional weights rather than from interventions on the optimizer.

**Injection Timestep.** In Section 5.2, we presented the results for a selection of environments while varying injection timestep. Figure 9 (right) suggests that across all games, changing the timestep by a

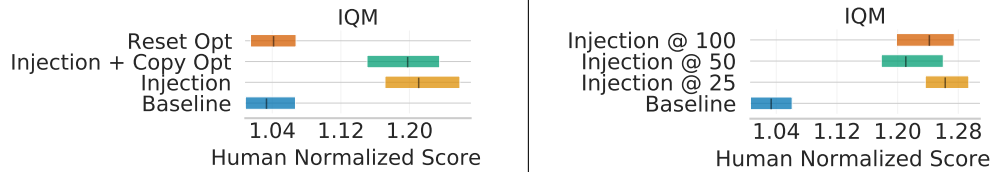


Figure 9: **Left:** Comparison of an agent with injection, an agent with injection but copied optimizer state for the newly initialized head (*Injection + Copy Opt*), and an agent that resets the optimizer statistics of the last two layers (*Reset Opt*). The results suggest that effects from interventions on the optimizer state are marginal compared to having new weights. **Right:** Aggregate performance for agents with varying injection timesteps. Whilst Figures 7 and 10 suggest that loss of plasticity might be happening at different paces across environments, the final IQM score is relatively robust with respect to the injection moment.



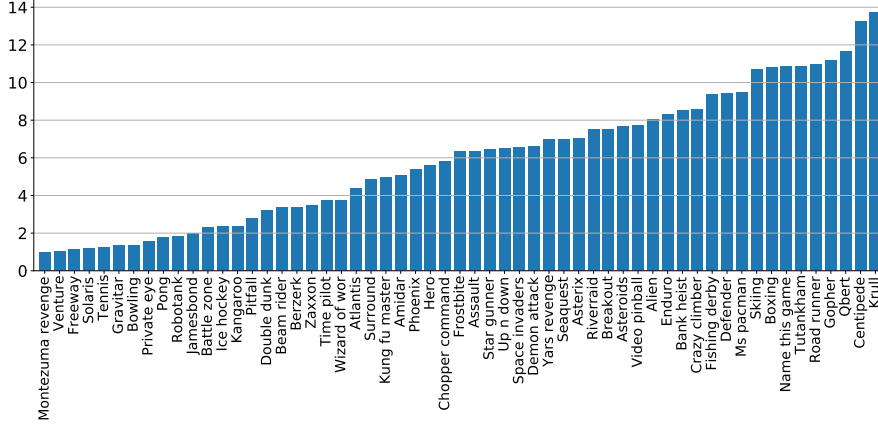


Figure 10: Per-game ratios of weight magnitude after learning for 200M frames and before experiencing any data. The ratios can vary up to 10 times between games.

factor of two yields comparable aggregate performance. Note though that we measure the IQM score after 200M frames, so the transient performance would differ depending on the timestep.

**Adaptive Criterion for Injection.** As a step towards getting rid of the need to specify the injection timestep, we also explored the option of having a criterion for triggering the intervention. If the agent has the initial weight magnitude  $\|w_0\|$  ( $w$  denotes here both encoder and head weights), we inject plasticity after the weight norm surpasses the  $3\|w_0\|$  threshold. The IQM scores of the agent with injection after 50M steps and with this heuristic coincide, although the frame when the agent reaches the threshold differs per game significantly: for some environments, it can be as small as 20M (such as Enduro), for other environments, it can be beyond 200M (such as Robotank) implying that the agent will learn without injection. Figure 10 gives an overview of how much the weight norm grows over the course of training (suggesting how fast the agent reaches the  $3\|w_0\|$  threshold on each game). We view devising an even more powerful criterion as a promising avenue for future work.

**L2 Regularization.** The observations about the norm increase made us try adding L2 regularization to the Double DQN agent. A grid search over  $[10^{-7}, 3 \cdot 10^{-7}, 10^{-6}, 3 \cdot 10^{-6}, 10^{-5}, 3 \cdot 10^{-5}]$  coefficients resulted in the best coefficient of  $3 \cdot 10^{-6}$  but leaving the aggregate score mostly the same; higher values resulted in significant performance deterioration. The result gives evidence that controlling the weight norm itself does not address plasticity loss but allows multiple interpretations. We speculate that L2 might be prematurely encouraging weights to have zero magnitude before obtaining high rewards (the effect would be especially profound in sparse reward settings) or that L2 might have undesirable side effects of smoothing approximate value functions while the true value functions might be non-smooth [Dong et al., 2020]. We are puzzled about the inefficacy of L2 in our experiments and mixed results from applying it in RL in past works: the majority of deep RL algorithms do not use it [Mnih et al., 2015, Schulman et al., 2015, Lillicrap et al., 2015, Mnih et al., 2016, Bellemare et al., 2017], although not without exceptions [Schrittwieser et al., 2021]. Some works have explicitly reported negative effects from controlling the weight norm in deep RL [Nikishin et al., 2022], while others highlighted its benefits [Farahmand et al., 2008, Li et al., 2023]; more research is needed to understand its effect in RL.

## C Details about the Baselines

In Section 5.3, we considered three alternative ways of dynamically addressing plasticity loss during training: resets, Shrink-and-Perturb (SnP), and naive width scaling. Resets re-initialize parameters of the last layers (using our notation, it corresponds to replacing  $h_{\theta}(\cdot)$  with  $h_{\theta'_t}(\cdot)$ ) and rely on a replay buffer to transfer knowledge before and after the intervention. Resets require the specification of the number of last layers and the application timestep. We ran a sweep over  $[1, 2]$  layers and two choices of timesteps: either once at 50M frames or twice at 50M, 100M, and 150M. Afterwards, we reported the results that attain the highest IQM score.

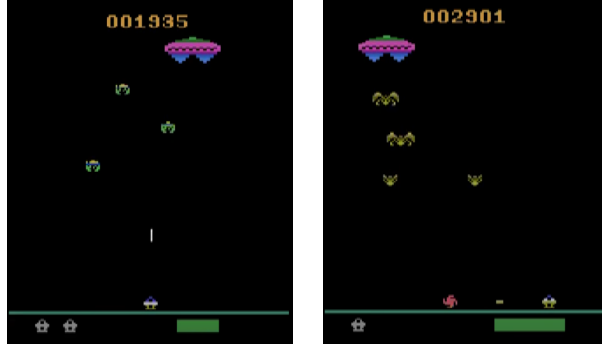


Figure 11: A demonstration of the `Assault` game evolution when a high-performing agent found on the Internet reaches a score of around 2800: before, the agent had to shoot only upwards; afterwards, it has to shoot up, left, and right. We interpret that the failure to improve upon the 2800 score is explained by exploration.

Shrink-and-Perturb modify all network weights  $w$  as  $w \leftarrow \lambda w + \sigma \epsilon$  at the given application timesteps, where  $\epsilon$  is a random vector with the same dimensionality as  $w$  sampled from the standard Gaussian distribution. SnP has three hyperparameters: the shrink coefficient  $\lambda$ , the noise scale  $\sigma$ , and the application timesteps. We performed a grid search over  $\lambda$  in  $[0.1, 0.3, 1]$ ,  $\sigma$  in  $[0.01, 0.1, 1]$ , and the same choices of timesteps as for resets.

The best hyperparameters ended up being the ones that somewhat minimized the effect of both resets (1 layer, 1 application time) and SnP ( $\lambda = 1$ ,  $\sigma = 0.01$ , 3 application times); other hyperparameters resulted in even worse performance. The paper on resets [Nikishin et al., 2022] demonstrates results on the Atari 100k benchmark [Kaiser et al., 2019] that focuses on a data-efficient regime with  $10^5$  interactions only and contains a subset of 26 (out of 57) games. In this setting, the replay buffer has all experiences encountered during the agent’s lifetime; this data can be sufficient for recovering the performance after a reset. In the Atari 200M setting though, the replay buffer has only 4M frames which might not be enough to recover fast after a reset. We speculate that similar reasoning applies to SnP since it can be seen as a soft version of resets [D’Oro et al., 2023].

For the width scaling method, we modify the last two layers by doubling their width. In detail, suppose the weight matrices are  $W_1 \in \mathbb{R}^{N \times K}$  and  $W_2 \in \mathbb{R}^{K \times |\mathcal{A}|}$ , where  $|\mathcal{A}|$  is the action space dimensionality. We create two new matrices  $W'_1 \in \mathbb{R}^{N \times 2K}$  and  $W'_2 \in \mathbb{R}^{2K \times |\mathcal{A}|}$  and fill the first  $K$  columns of  $W'_1$  with values of  $W_1$  and the first  $K$  rows of  $W'_2$  with values of  $W_2$ . The remaining entries are sampled from the random initializer. We perform a modification to the bias term  $b'_1 \in \mathbb{R}^{2K}$  by copying values from  $b_1 \in \mathbb{R}^K$  and setting the rest to zero. The width is scaled once at 50M.

Such a naive approach increases plasticity but its inability to improve over the standard Double DQN might be caused by adverse effects on the predictions after the intervention without output correction.

## D The Assault Game Analysis

We searched for a high-scoring behavior demonstration in the `Assault` environment on YouTube<sup>3</sup>. The screenshots in Figure 11 demonstrate the change of the environment around the score of 2800: before, the enemies were appearing only above the controlled starship, while afterwards, they start to appear from the left and from the right. Before the transition, the algorithm learned that actions “shoot left” and “shoot right” were irrelevant, while afterwards, it has to start using these actions, suggesting that the performance plateau can be attributed to exploration challenges.

We highlight that it was the suggested protocol for diagnosis that led to the insight: after seeing that the post-injection agent has the same performance plateau as the baseline, we decided to investigate the behavior in the game and realized that previously irrelevant actions became critical.

<sup>3</sup><https://youtu.be/HwWJrb2PQQ0>