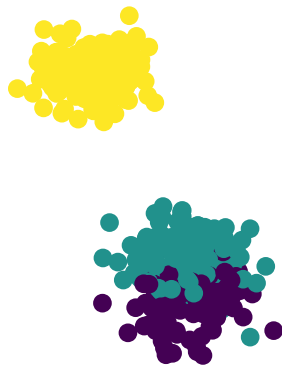
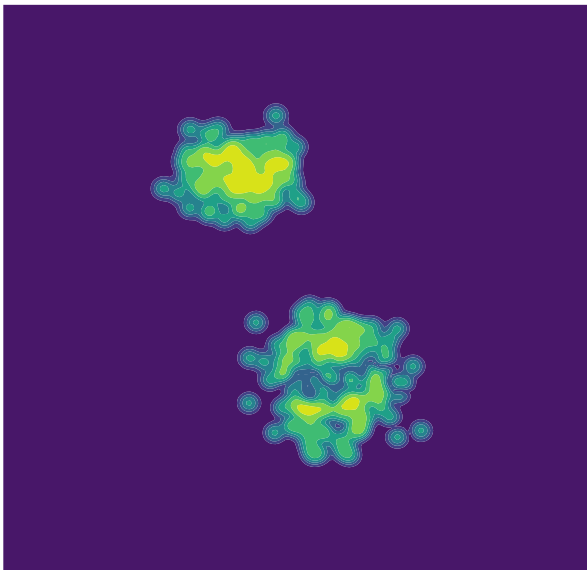


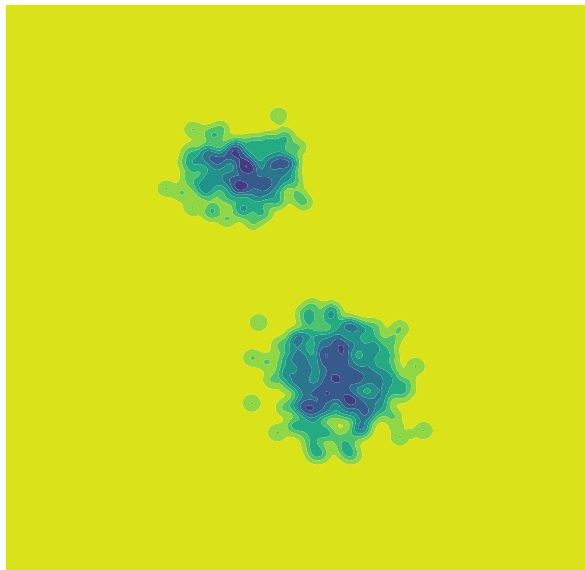
Raw data



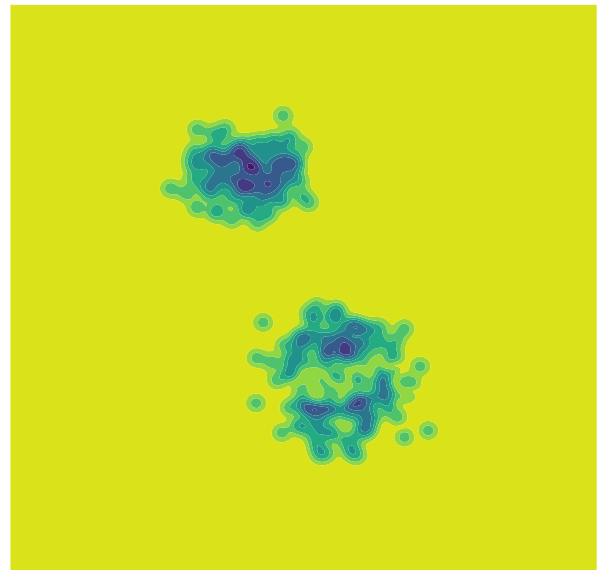
Predictions (ISJ)



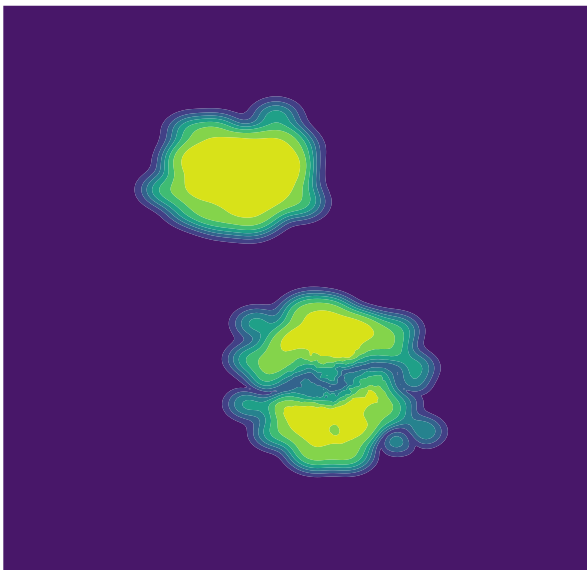
Uncertainty (epistemic)



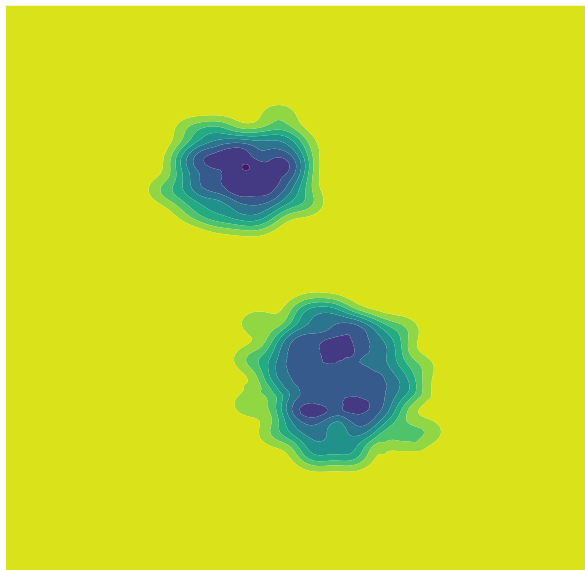
Uncertainty (aleatoric)



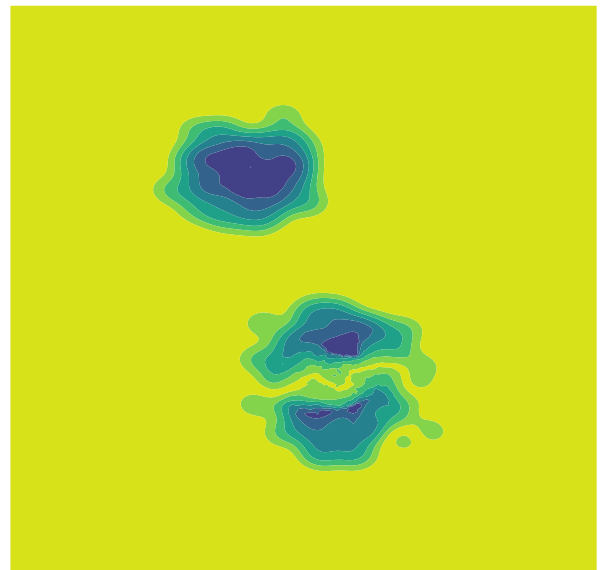
Predictions (classification)



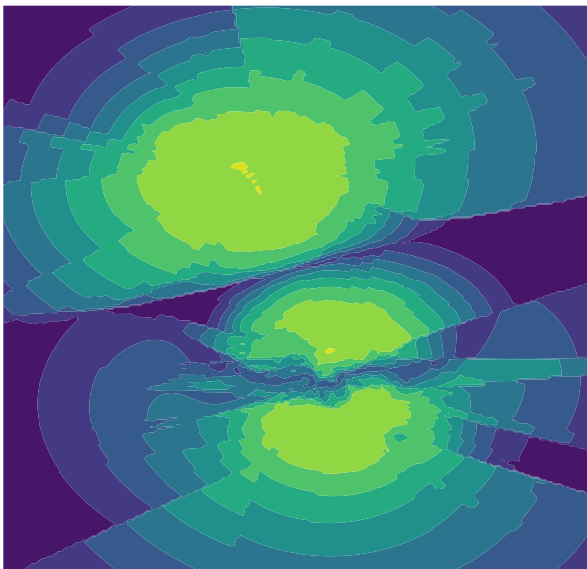
Uncertainty (epistemic)



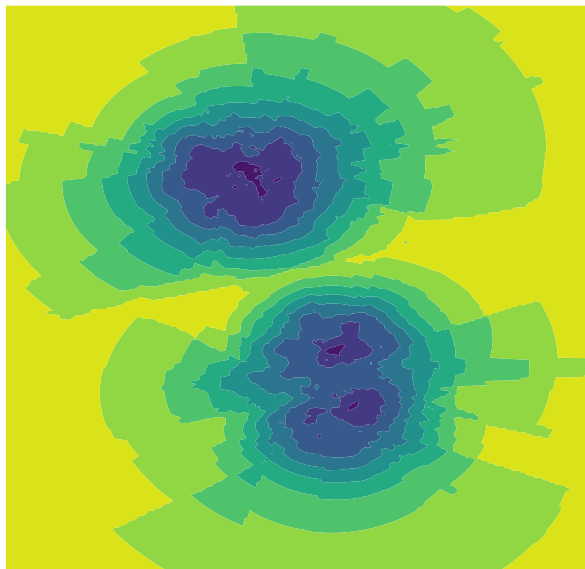
Uncertainty (aleatoric)



Predictions (random exponential)Uncertainty (epistemic)



Uncertainty (epistemic)



Uncertainty (aleatoric)

